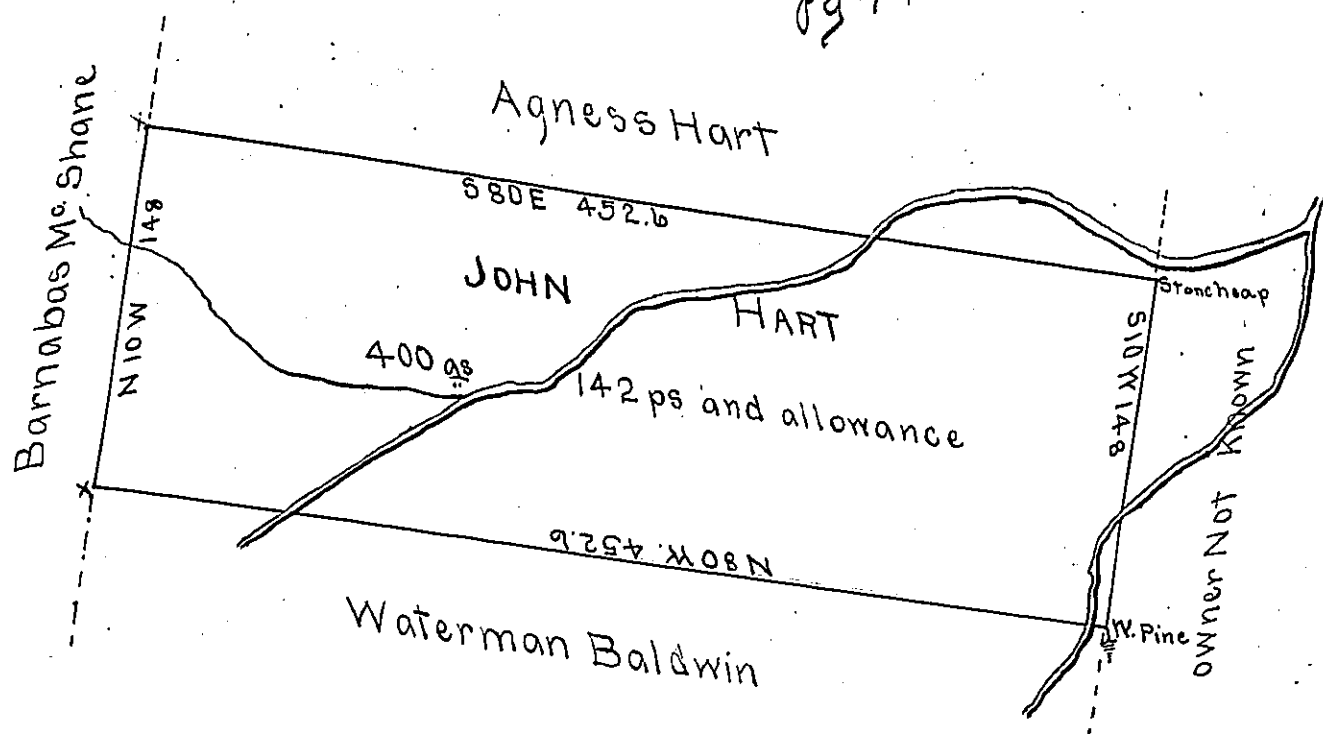


Pg 44



A Draught of a tract of land containing four hundred acres and one hundred and forty two perches and allowance of six percent for roads. Situate about one Mile from the Susquehanna River on the west side adjoining south on Land of Waterman Baldwin in the Township of Towanda and County of Bradford (pb) to have been Surveyed to John Hart the — day (pb) August 1794. In pursuance of a Warrant (pb) the 10th day of February 1794 resurveyed (pb) pursuance of the same the 26th day March 1813 and Certified by

Jonathan Stevens D.S.

NB. this tract has a Settler on it.

Andrew Porter Esq. S Genl.

IN TESTIMONY that the above is a copy of the original remaining on file in the Department of Internal Affairs of Pennsylvania, made conformably to an Act of Assembly approved the 16th day of February, 1833, I have hereunto set my Hand and caused the Seal of said Department to be affixed at Harrisburg, this twenty-ninth day of March 1905

Francis R. Brown
Secretary of Internal Affairs.